

# 宇宙天気の基本研究 Space Weather Study

荻野竜樹

Tatsuki Ogino

Solar-Terrestrial Environment Laboratory

Nagoya University

学術創成「宇宙天気の基本研究」  
宇宙天気モデリングタスクフォース  
2006年12月13-16日磁気嵐イベント

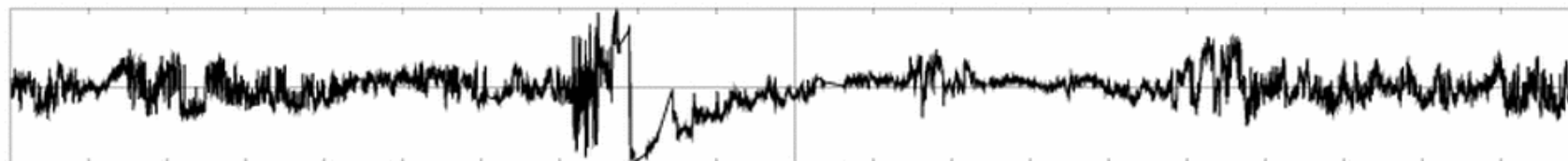
-The Sun's Active Week -

- ・太陽活動が低調な時期に起きた、Mクラスのフレア
- ・太陽プロトン(スペクトルは非常にハード)の影響が、ESAの衛星を中心に発生
- ・2003年10月のこだま(DRTS)の衛星異常SEUと、よく似た状況

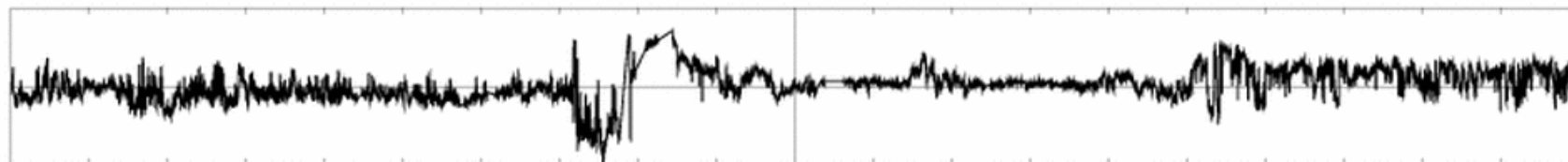
# ACE Data

December 11-20, 2003

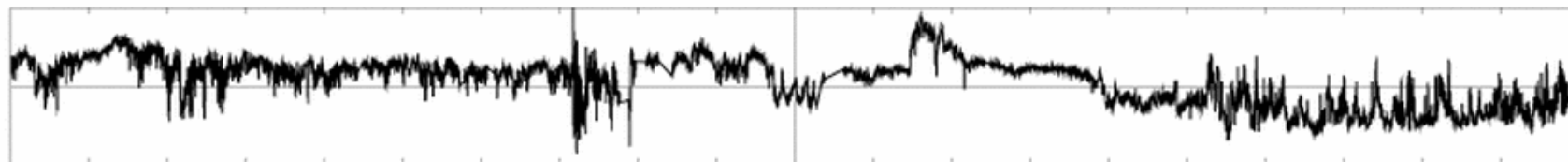
ACE Data, 00:00-24:00, 12/11-20, 2006



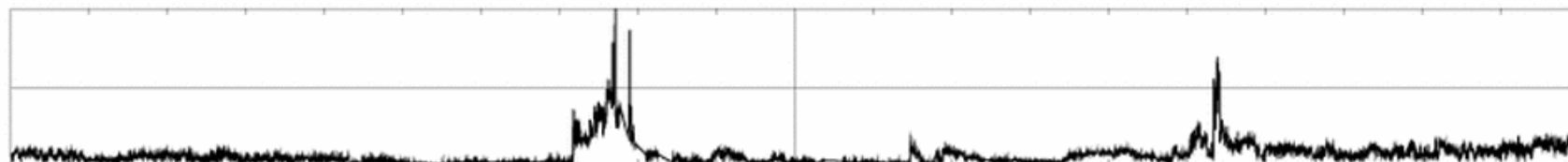
IMF Bz min = -1.67e+01 max = 1.67e+01



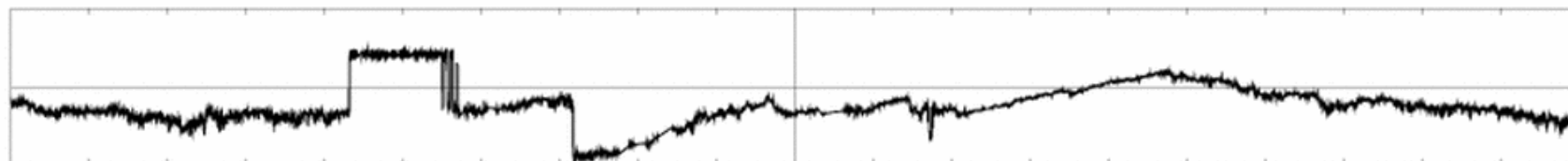
IMF By min = -1.96e+01 max = 1.96e+01



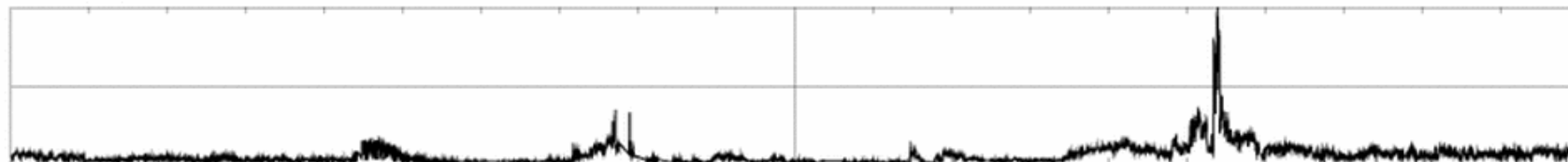
IMF Bx min = -1.28e+01 max = 1.28e+01



D Pressuremin = 0.00e+00 max = 1.81e+01

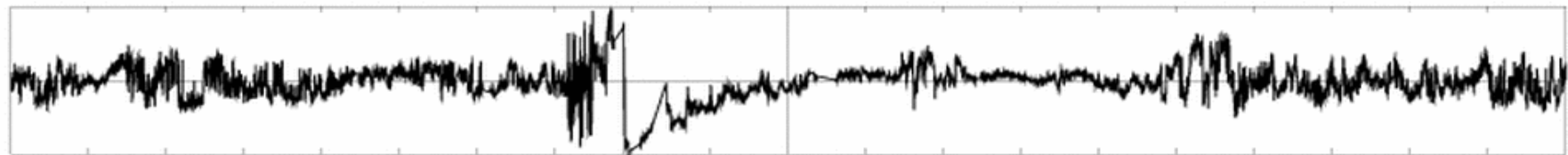


Velocity min = -9.71e+02 max = 0.00e+00

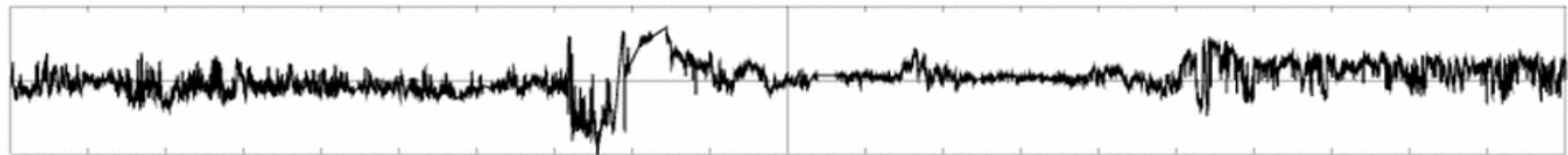


Density min = 0.00e+00 max = 3.92e+01

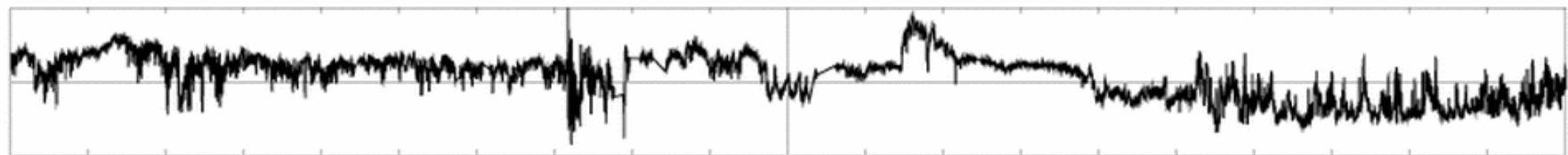
ACE Data, 00:00-24:00, 12/11-20, 2006



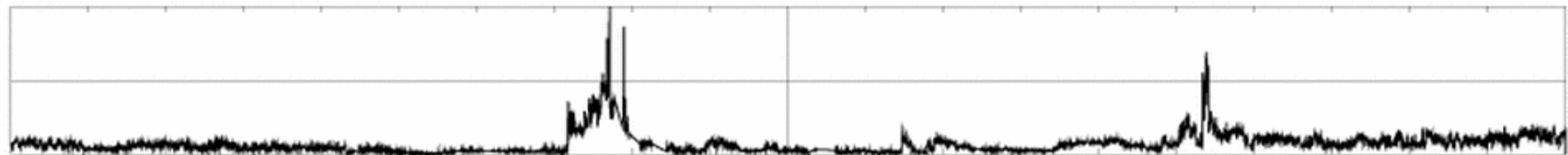
IMF Bz min = -1.67e+01 max = 1.67e+01



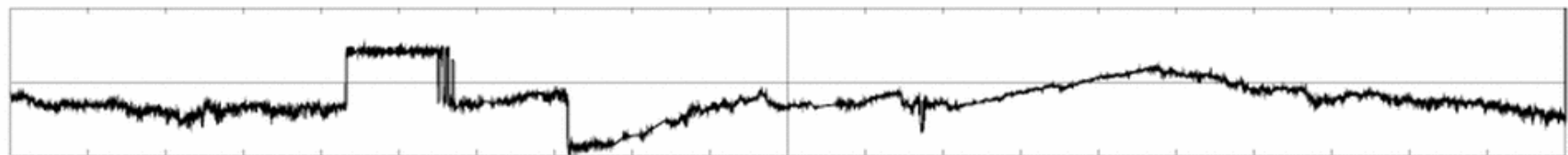
IMF By min = -1.96e+01 max = 1.96e+01



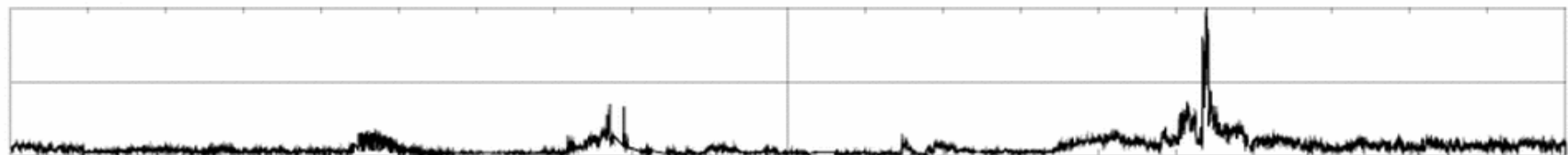
IMF Bx min = -1.28e+01 max = 1.28e+01



D Pressure min = 0.00e+00 max = 1.81e+01

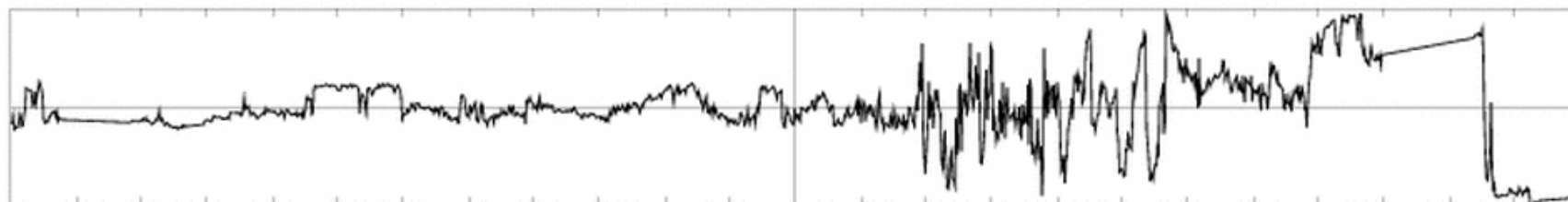


Velocity min = -9.71e+02 max = 0.00e+00

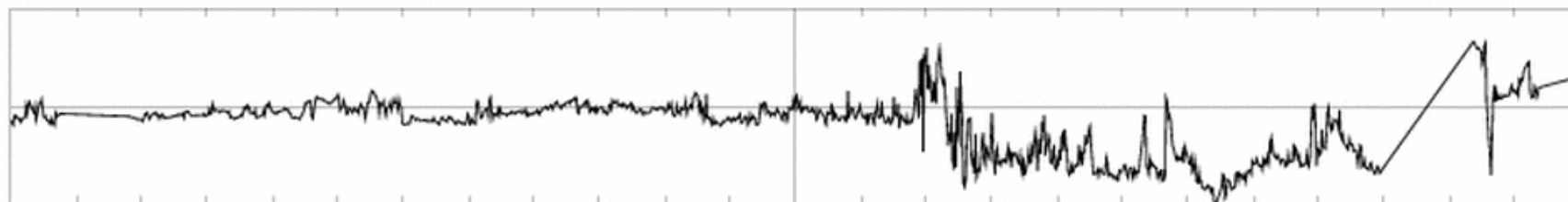


Density min = 0.00e+00 max = 3.92e+01

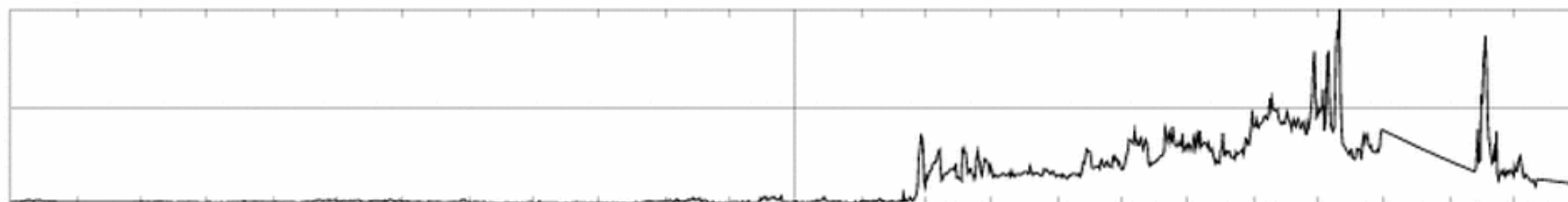
ACE Data, 00:00-24:00, 12/14, 2006



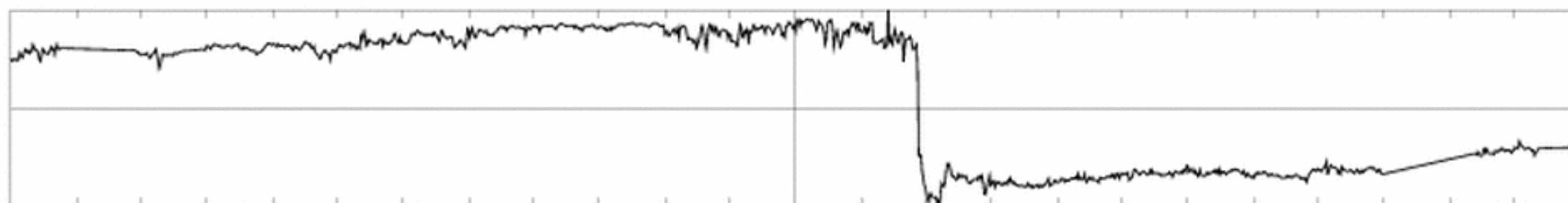
IMF Bz min = -1.67e+01 max = 1.67e+01



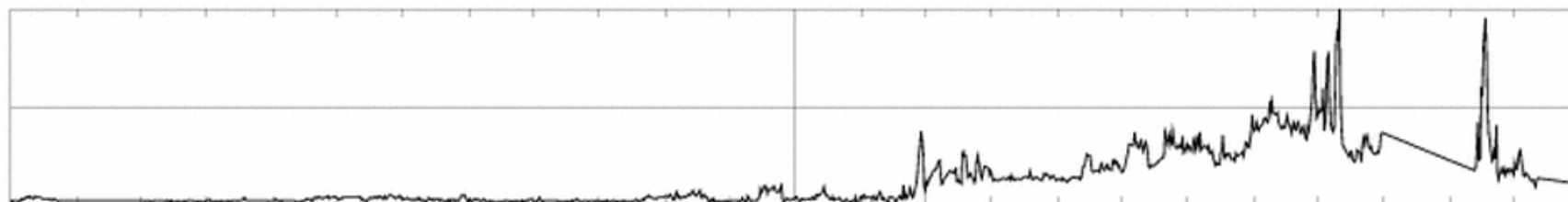
IMF By min = -1.96e+01 max = 1.96e+01



D Pressuremin min = 1.46e-01 max = 1.81e+01

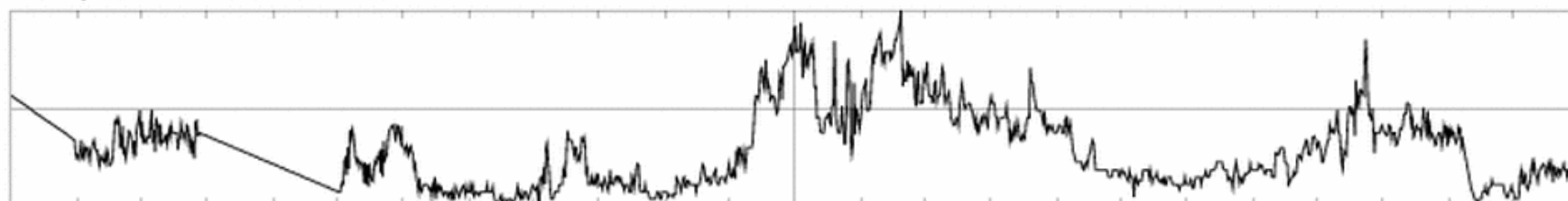
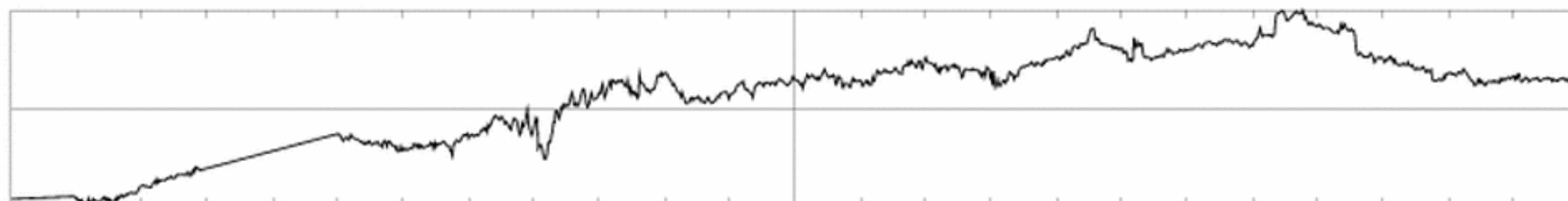
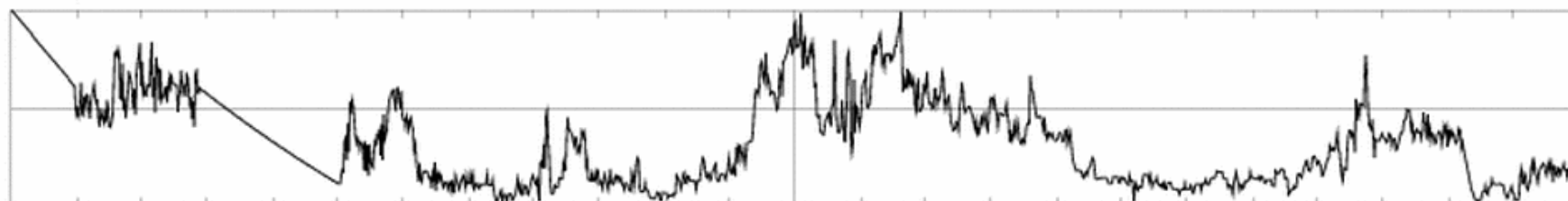
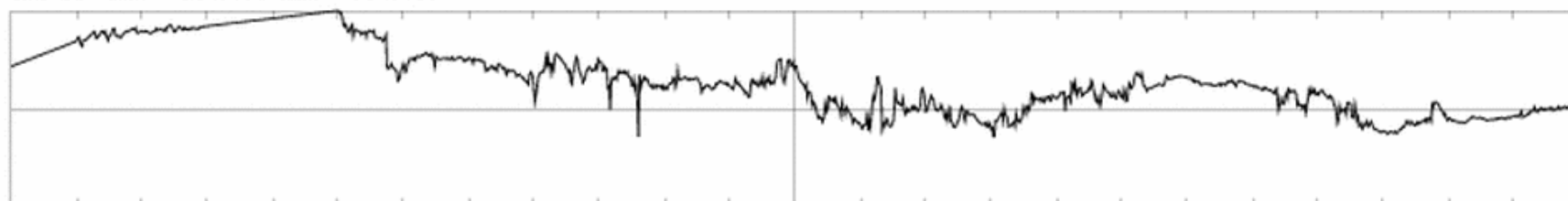
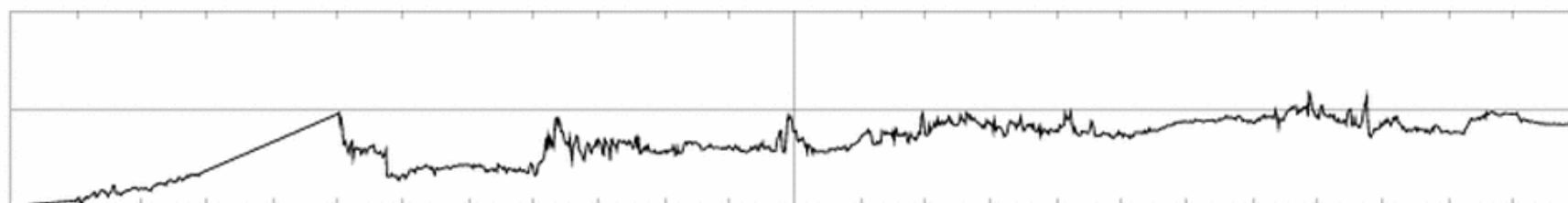


Velocity min = -9.71e+02 max = -5.30e+02

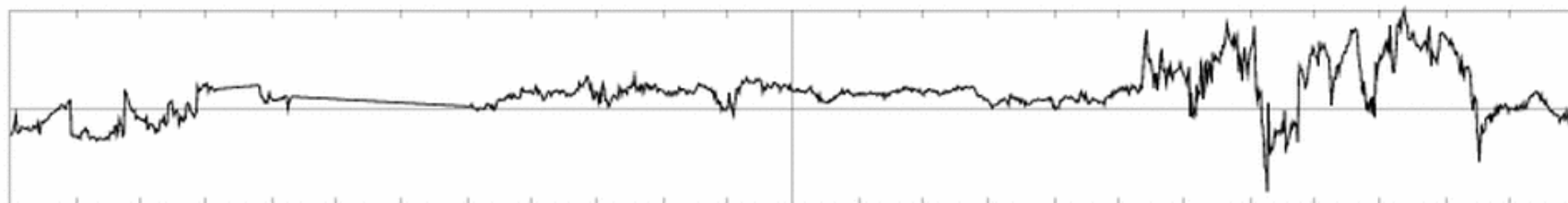


Density min = 3.10e-01 max = 1.36e+01

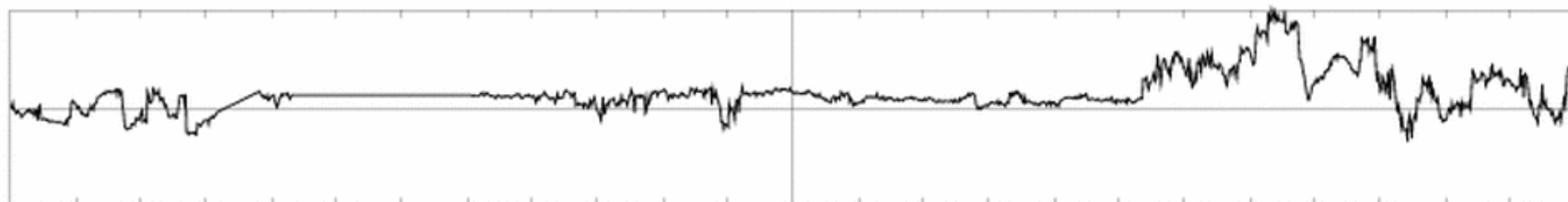
# ACE Data, 00:00-24:00, 12/15, 2006



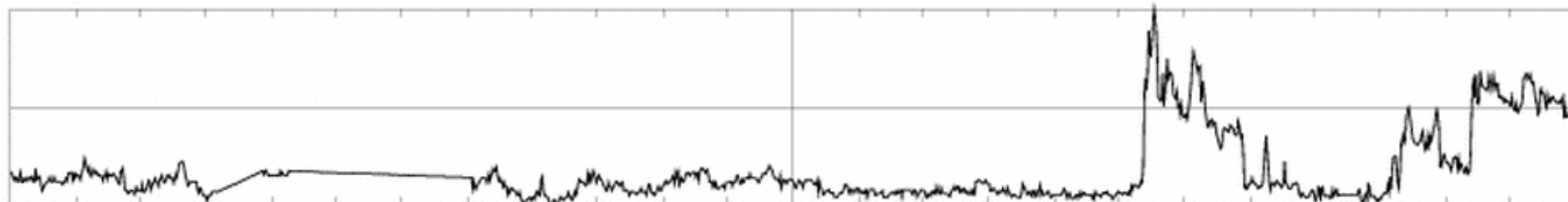
# ACE Data, 00:00-24:00, 12/16, 2006



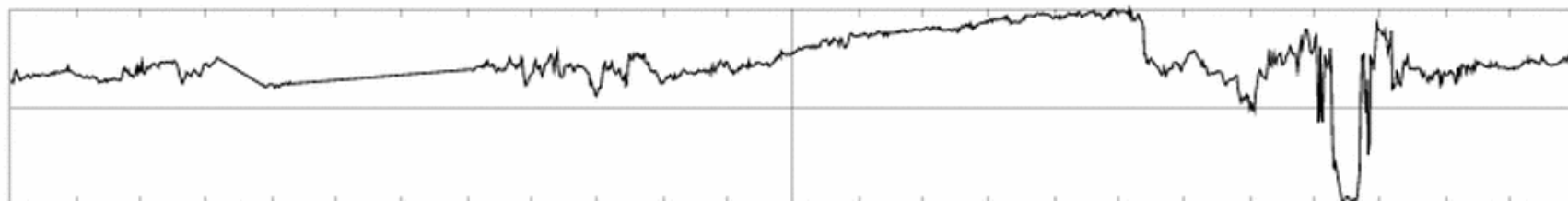
IMF Bz min = -7.82e+00 max = 7.82e+00



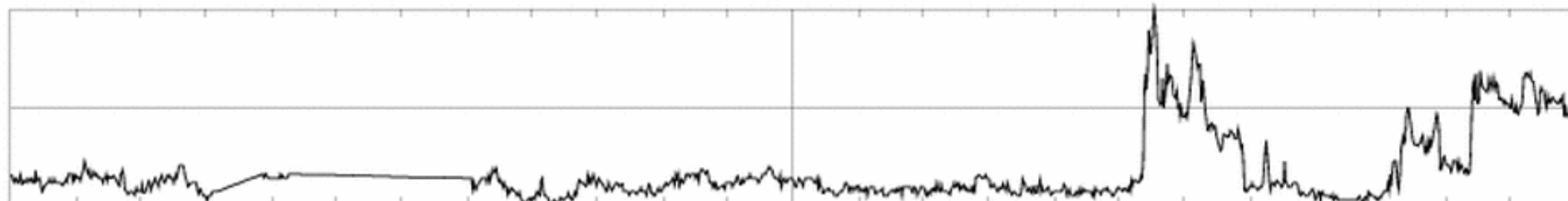
IMF By min = -8.43e+00 max = 8.43e+00



D Pressure min = 6.29e-02 max = 3.00e+00



Velocity min = -8.07e+02 max = -5.57e+02



Density min = 1.00e-01 max = 4.55e+00



